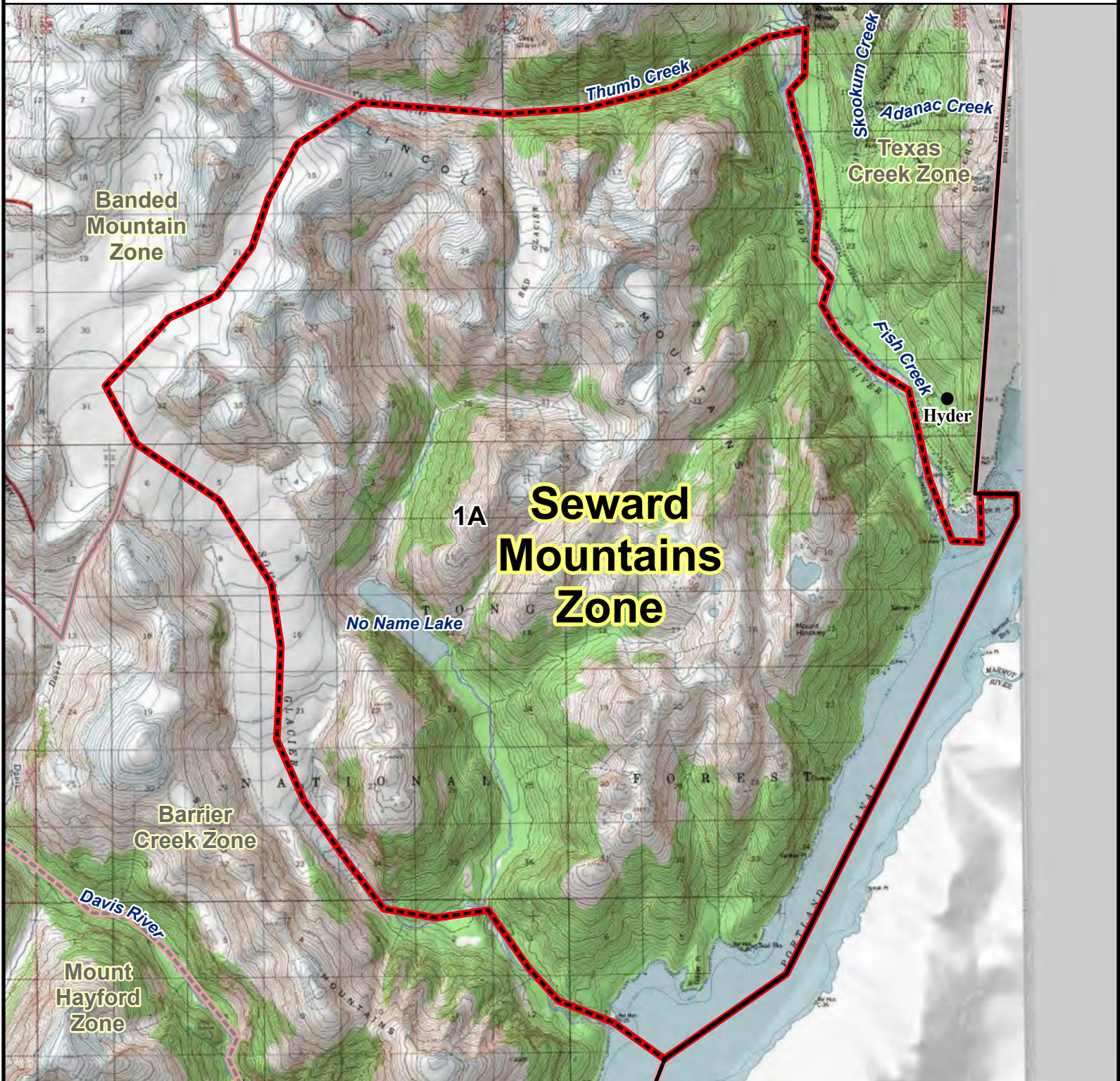


RG002 MOUNTAIN GOAT HUNT

Seward Mountains Zone



Seward Mountains Zone: Originating in the Portland Canal at the US-Canadian Border northwest along the Soule Glacier drainage, north through Soule Glacier, then northeast through the arm of the Soule Glacier that leads to Thumb Glacier, east over Thumb Glacier to the outlet of Thumb Creek, east along Thumb Creek to the outlet of the creek into the Salmon River, south along the Salmon River to where the Salmon River meets the Portland Canal, then southwest to the point of origin.

